

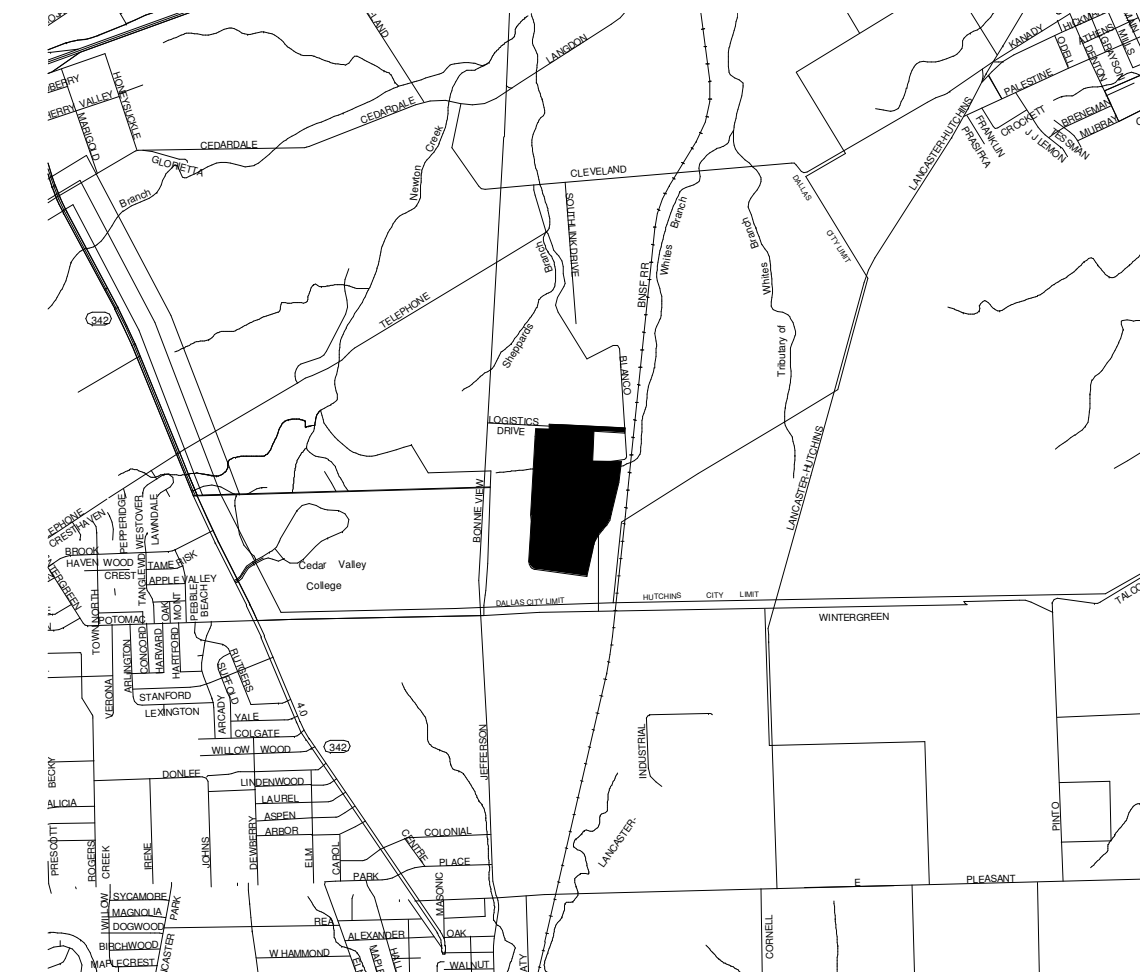
NOTES

100. PROPERTY LINE.
101. ACCESSIBLE PARKING STALL WITH SIGNAGE.
102. VAN ACCESSIBLE PARKING STALL WITH SIGNAGE.
103. LANDSCAPE AND IRRIGATION AREA.
104. PRECAST CONCRETE WHEEL STOP.
105. ACCESSIBLE CURB RAMP WITH TRUNCATED DOMES.
106. CONCRETE RAMP.
107. CONCRETE PAVEMENT.
108. EASEMENT LINE, SEE CIVIL.
109. ACCESSIBLE LOADING ZONE.
110. 6" CONCRETE CURB.
111. DETENTION BASIN.
112. FIRE LANE.
113. DIRECTIONAL TRUCK SIGN
114. LIFT ARM WITH CARD READER AND GOOSE-NECK (INBOUND), LIFT ARM WITH LOOP (OUTBOUND).
115. LIFT ARM WITH LOOP & GOOSE-NECK AT MAIN GATE
116. TRUCK SCALE
117. GO TO VERIFY SIZE/LOCATION OF WALL OPENING AND PIT AT COMPACTOR AND TRAILER GENERATOR - TYP.
118. 2' CONCRETE RODENT STRIP AROUND ENTIRE BUILDING WHERE NO OTHER CONCRETE OCCURS - TYP.
119. 6'x8" FENCE AT PATIO, PREFAB CANOPY TO COVER HALF OF PATIO
120. TOTE WASH AREA WITH FLOOR DRAIN.
121. SCRUBBER DUMP W/ TRENCH DRAIN.
122. BATTERY CHARGING STATIONS.
- 123.
124. EXTERIOR GALVANIZED METAL STAIR TO ROOF
125. GO TO VERIFY SIZE/LOCATION OF WALL OPENING AND PIT AT COMPACTOR AND TRAILER GENERATOR
126. CONCRETE STOOP.
127. 3 FLAG POLES
128. "NO EXIT" SIGN
129. LIFT ARM WITH REMOTE ACCESS & CARD READER
130. LIFT ARM WITH LOOP
131. SMOKER'S AREA 25' FROM BUILDING
132. PROVIDE CONCRETE STOOP AND STAIRS FOR GRADE DIFFERENCE AT DOORS. AREA OF REFUGE TO BE PROVIDED AT EGRESS DOOR.
133. RETAINING WALL WITH GUARD RAIL WHERE WALL IS GREATER THAN 2'-6" ABOVE GRADE. VERIFY LOCATION IN FIELD
134. GUARD RAIL TO BEGIN WHERE RAMP IS NO GREATER THAN 2'-6" ABOVE GRADE. VERIFY LOCATION IN FIELD.
135. ARCHITECTURAL FEATURE - 4' PROJECTION

SITE LEGEND

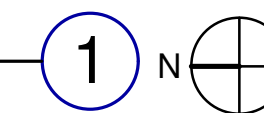
- PARKING STALL COUNT TOTAL
- DOCK HIGH TRUCK DOOR
- GRADE LEVEL TRUCK DOOR

VICINITY MAP



ARCHITECTURAL SITE PLAN (FOR REFERENCE ONLY)

SCALE: 1" = 160'-0"



PROJECT WRIGLEY

**4450 LOGISTICS DRIVE
DALLAS, TEXAS 75241**

PA/PM:	IS
DRAWN BY.:	MP
JOB NO.:	CHI20-0068-00

SHEET
AF1.0

architecture
planning
interiors
graphics
civil engineering

1315 2nd Street, Suite #410
Oak Brook, IL 60523
P 630.218.0063
F 630.218.0064

WARE MALCOLM
Leading Design for Commercial Real Estate

State of Illinois Design Firm Registration No. 184-00469

60% PRICING SET

2/22/2021 7:28:36 PM



MAIN OFFICE NORTH/WEST PERSPECTIVE

SCALE: NTS

1

- 1 - TILT-UP CONCRETE PANELS
- 2 - STOREFRONT GLAZING WITH FRAME EXTENSION
- 3 - CURTAIN WALL WITH SPANDREL
- 4 - ALUMINUM COMPOSITE METAL CANOPY
- 5 - SIGNAGE/BRANDING LOCATION
- 6 - INSULATED METAL PANEL
- 7 - COLORED INSULATED METAL PANEL
- 8 - PROJECTED ARTICULATION, MATERIAL TO MATCH MAIN BUILDING
- 9 - EIFS CLADDING

NOTE: SEE SHEET AF3.0 FOR MATERIALS, DETAILS AND DIMENSIONS

State of Illinois Design Firm Registration No. 184-00469
WARE MALCOMB
 Leading Design for Commercial Real Estate

architecture
 planning
 interiors
 graphics
 civil engineering
 1315 22nd Street, Suite #410
 Oak Brook, IL 60523
 P 630.218.0063
 F 630.218.0064

PROJECT WRIGLEY

4450 LOGISTICS DRIVE
 DALLAS, TEXAS 75241

PA/PM: Approver
 DRAWN BY.: Author
 JOB NO.: CHI20-0068-00

SHEET
AF2.0

60% PRICING SET
 2/22/2021 7:28:37 PM

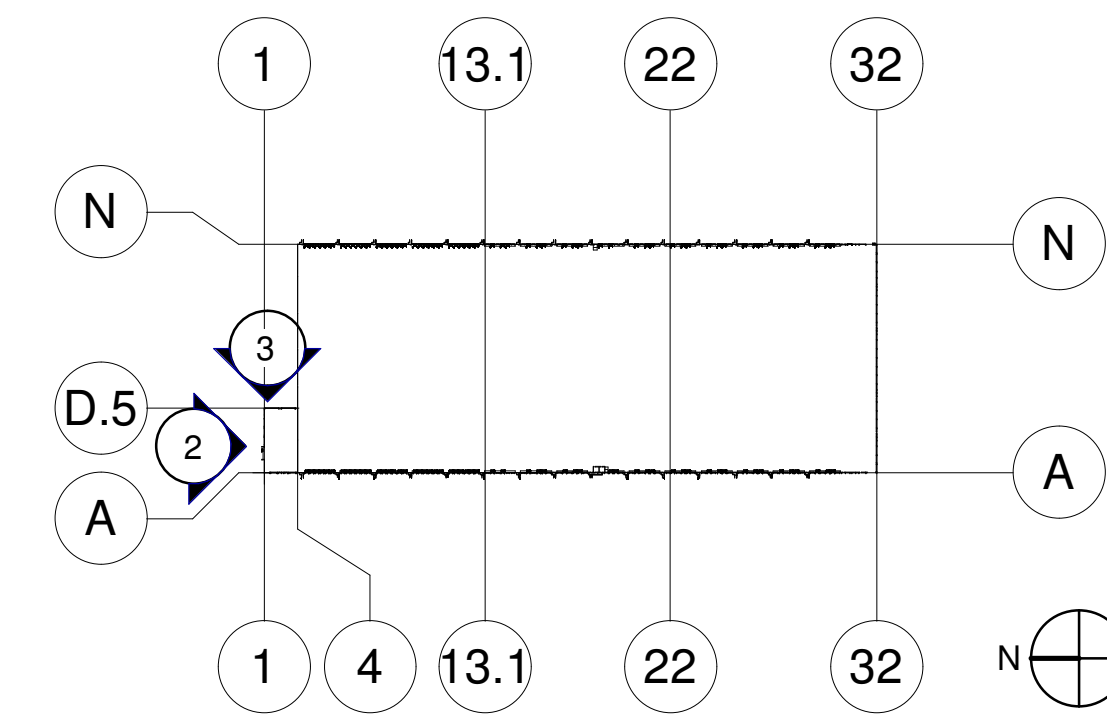


MAIN OFFICE NORTH ELEVATION RENDERING

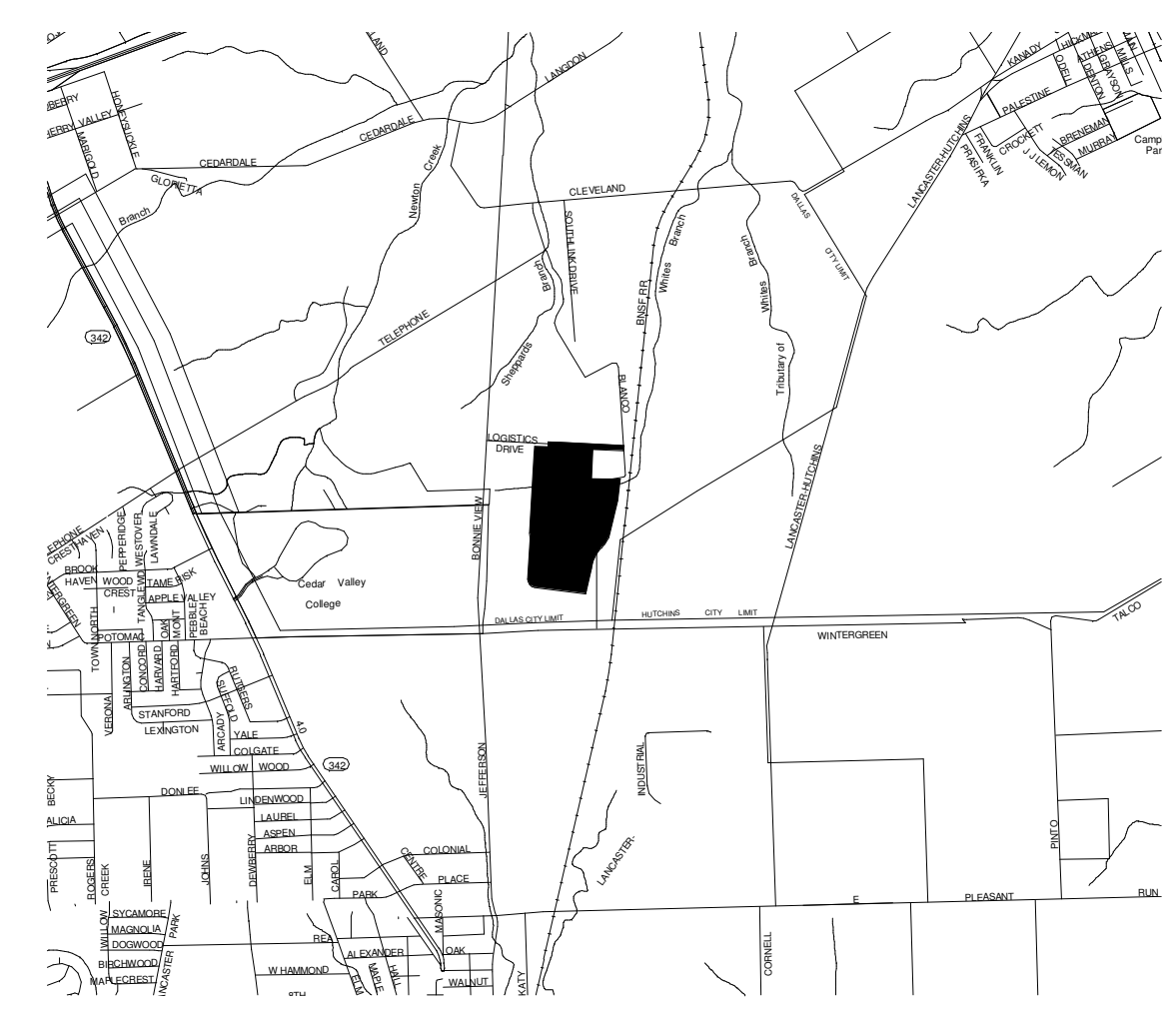
SCALE: NTS

2

KEY PLAN



VICINITY MAP



MAIN OFFICE EAST ELEVATION RENDERING

SCALE: NTS

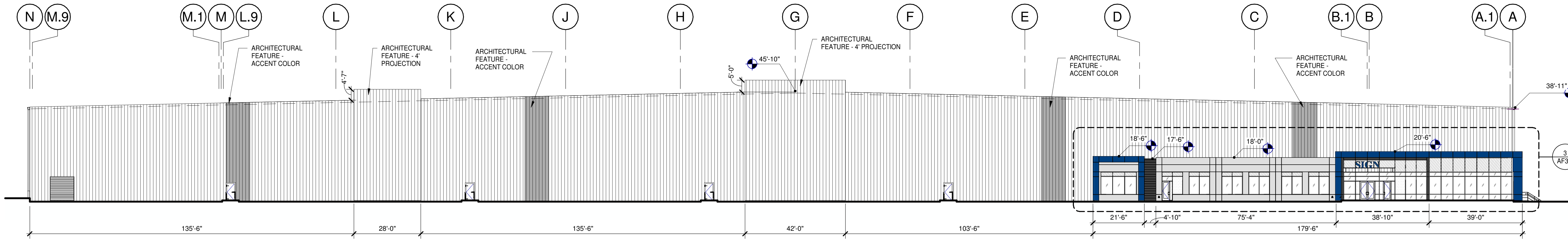
3



NORTH ELEVATION RENDERING

SCALE: NTS

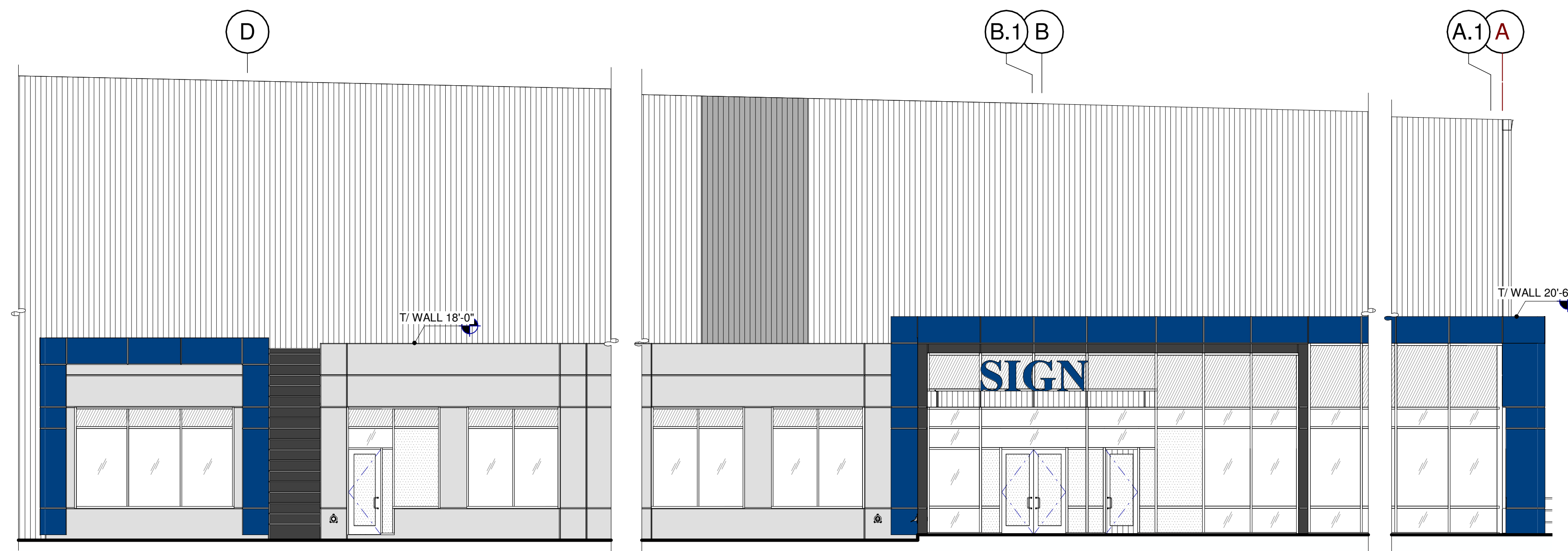
1



OVERALL NORTH EXTERIOR ELEVATION

SCALE: 3/64" = 1'-0"

2

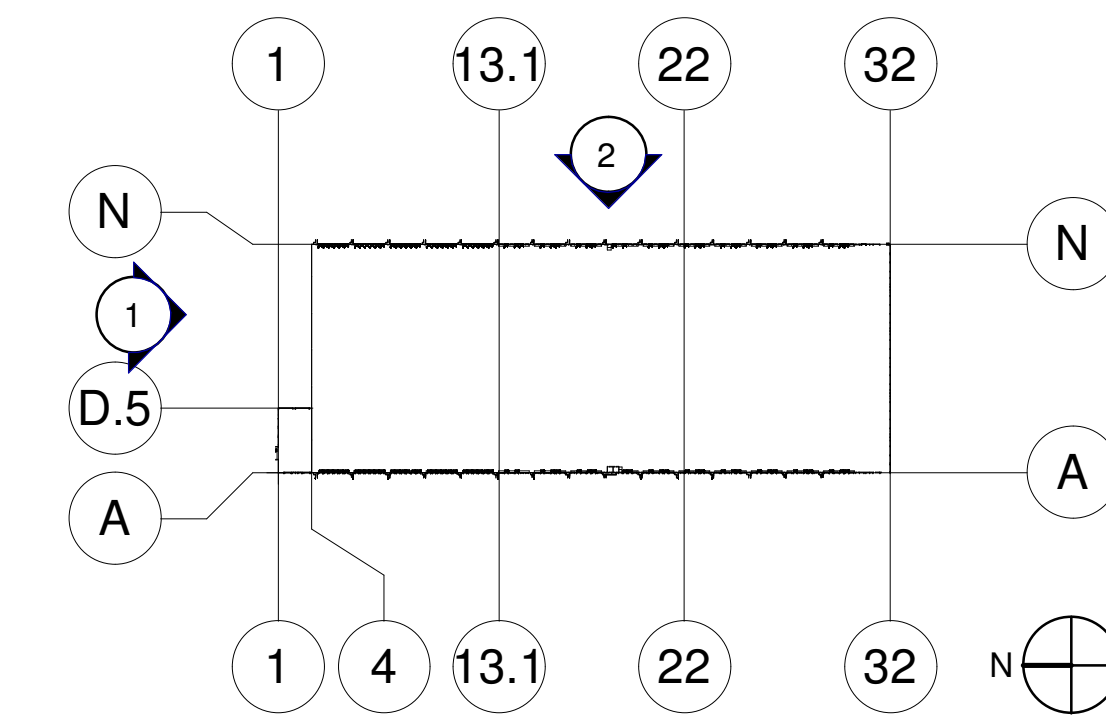


ENLARGED EXTERIOR ELEVATION

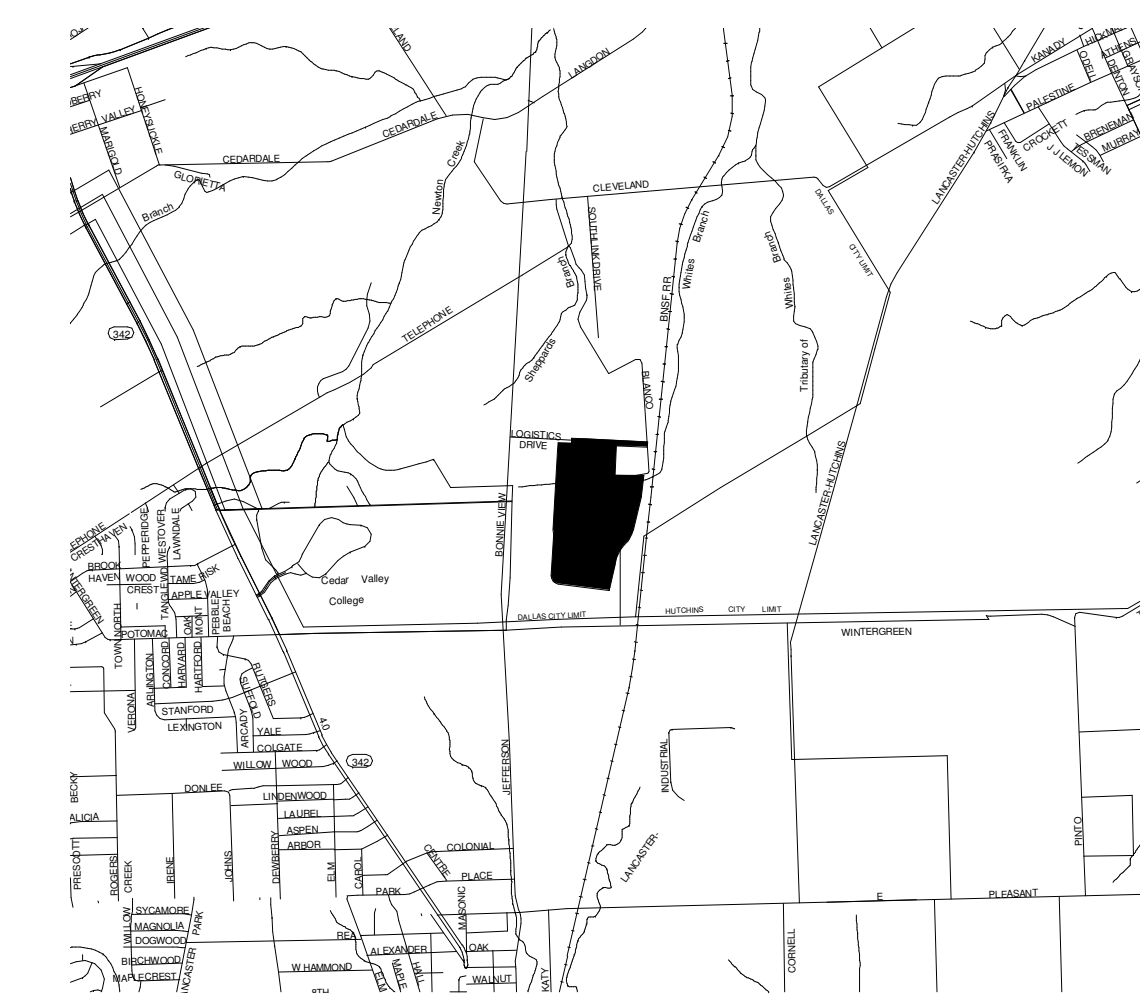
SCALE: 1/8" = 1'-0"

3

KEY PLAN



VICINITY MAP



LEGEND

GLASS:		TILT-UP / EIFS PAINT COLORS:		IMP COLORS:	
	VISION GLASS - TINTED GRAY		BASE COLOR: SW 7073 NETWORK GRAY		BASE COLOR: WHITE
	SPANDREL GLASS TO MATCH VISION GLASS TINT		SECONDARY COLOR: SW 7075 WEB GRAY		SECONDARY COLOR: GREY TO MATCH SW 7075 WEB GRAY
	TEMPERED GLASS		ACCENT COLOR: SW 6967 FRANK BLUE		

State of Illinois Design Firm Registration No. 184-00469
WARE MALCOMB
 Leading Design for Commercial Real Estate

architecture
 planning
 interiors
 graphics
 civil engineering
 1315 2nd Street, Suite 410
 Oak Brook, IL 60523
 P 630.218.0063
 F 630.218.0064

PROJECT WRIGLEY

**4450 LOGISTICS DRIVE
 DALLAS, TEXAS 75241**

PA/PM: Approver
 DRAWN BY.: Author
 JOB NO.: CHI20-0068-00

SHEET
AF3.0

60% PRICING SET

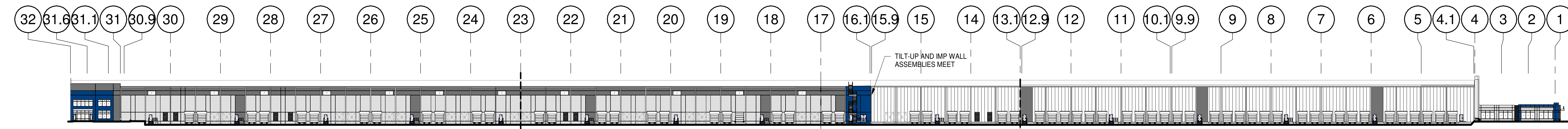
2/22/2021 7:28:40 PM



WEST ELEVATION RENDERING

SCALE: NTS

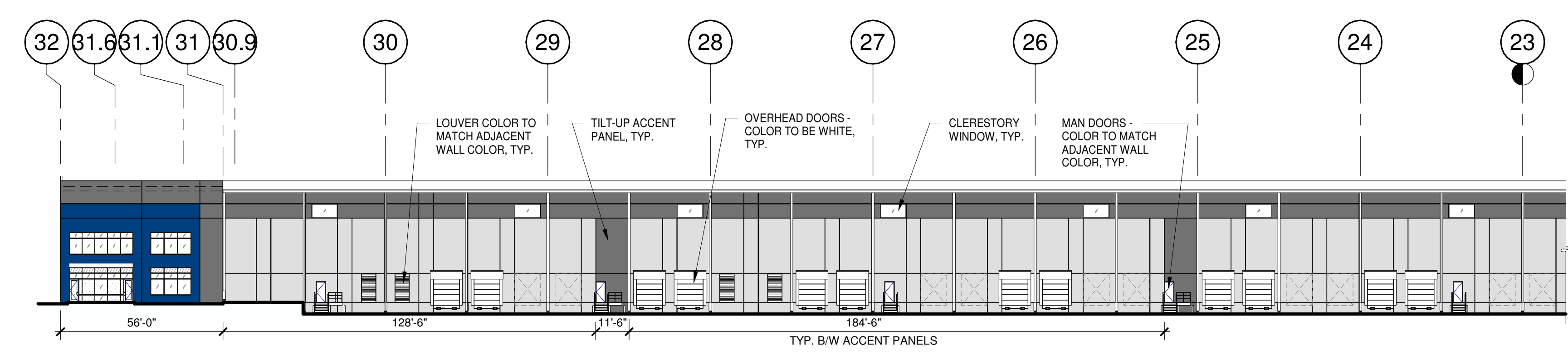
1



OVERALL EAST EXTERIOR ELEVATION

SCALE: 1" = 60'-0"

2



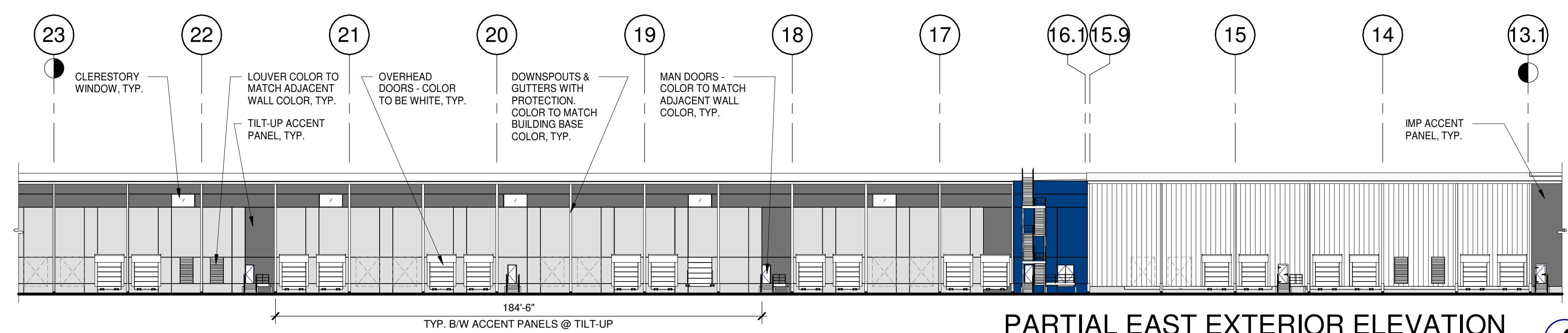
PARTIAL EAST EXTERIOR ELEVATION

SCALE: 1" = 30'-0"

3

LEGEND

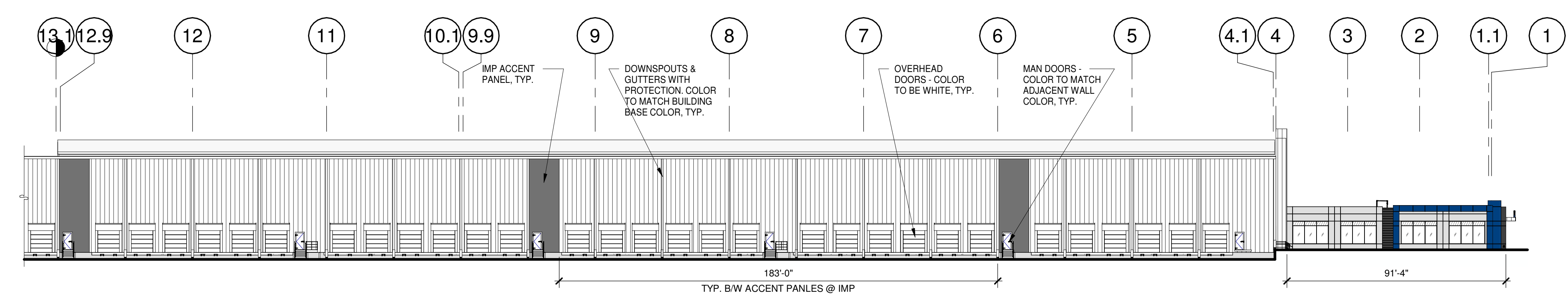
TILT-UP / EIFS PAINT COLORS:		IMP COLORS:	
	BASE COLOR: SW 7073 NETWORK GRAY		BASE COLOR: WHITE
	SECONDARY COLOR: SW 7075 WEB GRAY		SECONDARY COLOR: GREY TO MATCH SW 7075 WEB GRAY
	ACCENT COLOR: SW 6967 FRANK BLUE		
GLASS:			
	VISION GLASS - TINTED GRAY		
	SPANDREL GLASS TO MATCH VISION GLASS TINT		
	TEMPERED GLASS		



PARTIAL EAST EXTERIOR ELEVATION

SCALE: 1" = 30'-0"

4

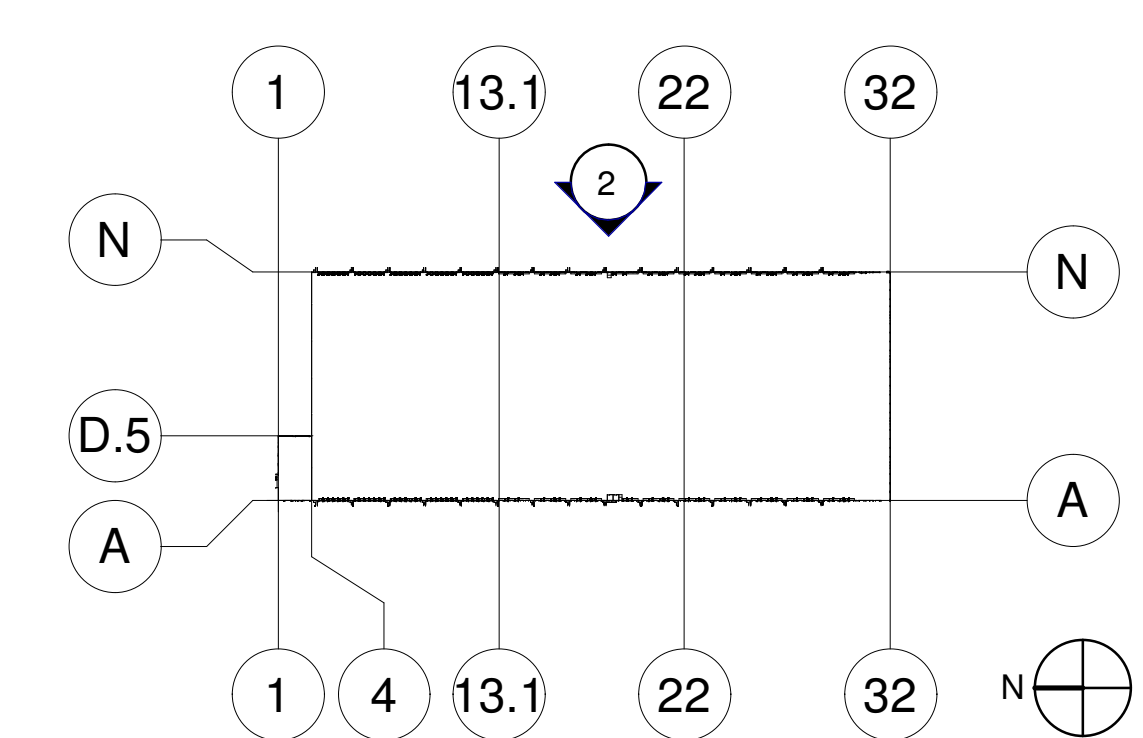


PARTIAL ELEVATION

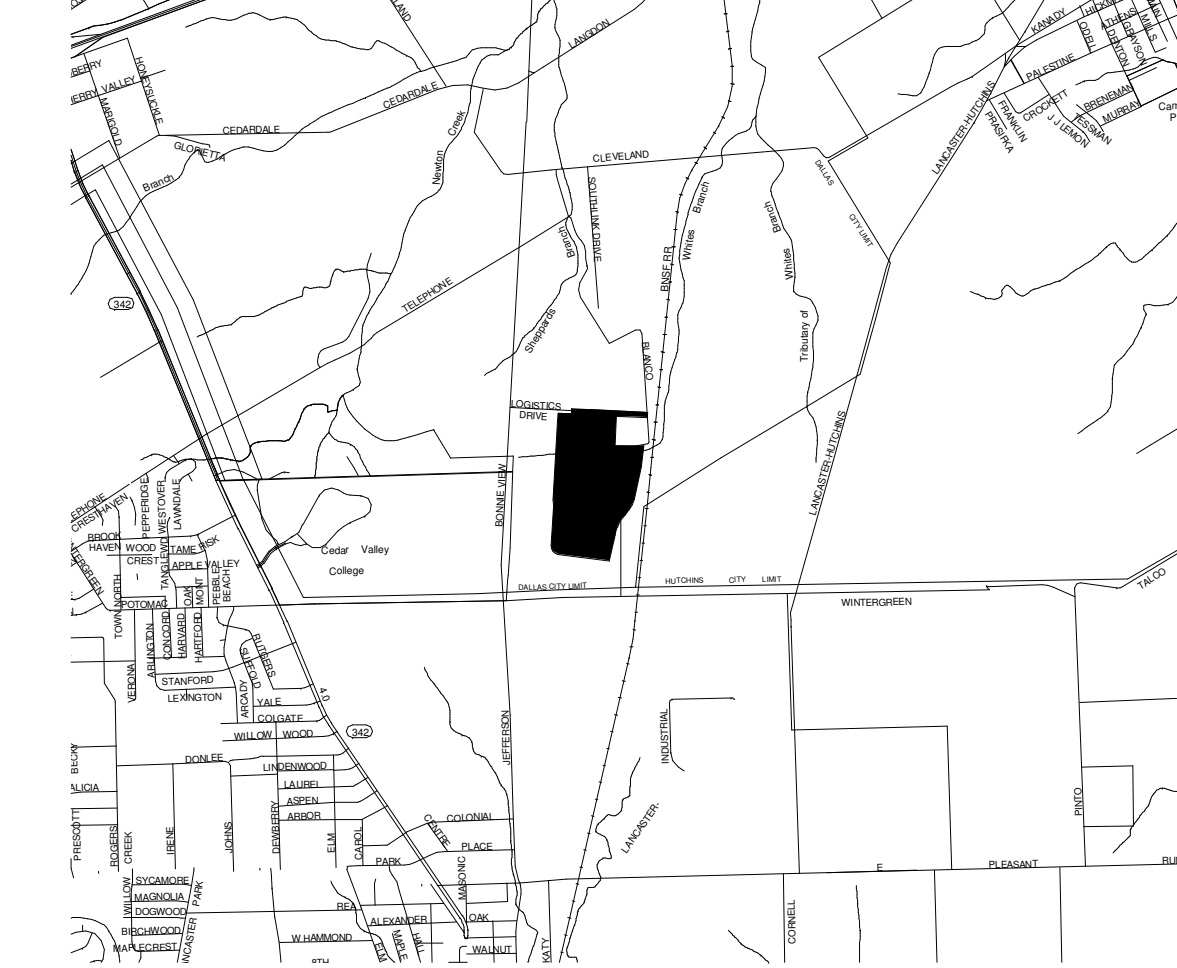
SCALE: 1" = 30'-0"

5

KEY PLAN



VICINITY MAP



PROJECT WRIGLEY
4450 LOGISTICS DRIVE
DALLAS, TEXAS 75241

PA/PM: Approver
 DRAWN BY: Author
 JOB NO.: CHI20-0068-00

SHEET
AF4.0

WARE MALCOMB
 Leading Design for Commercial Real Estate

State of Illinois Design Firm Registration No. 184-004069
 architecture
 planning
 interiors
 graphics
 civil engineering
 1315 2nd Street, Suite 410
 Oak Brook, IL 60153
 P 630.218.0063
 F 630.218.0064

60% PRICING SET

2/22/2021 7:28:46 PM